

January 30, 2026

To whom it may concern:

Company: SCSK Corporation
Representative: Takaaki Tuma
President and Representative Director
Code: 9719 (TSE Prime Section)
Contact: Corporate Communications Dept.
(Tel. +81-3-5166-1150)

Notice Concerning Structural Reforms

SCSK Corporation (hereinafter, the Company) announced the Structural Reforms, which were resolved at the Board of Directors meeting held on January 30, 2026, as detailed

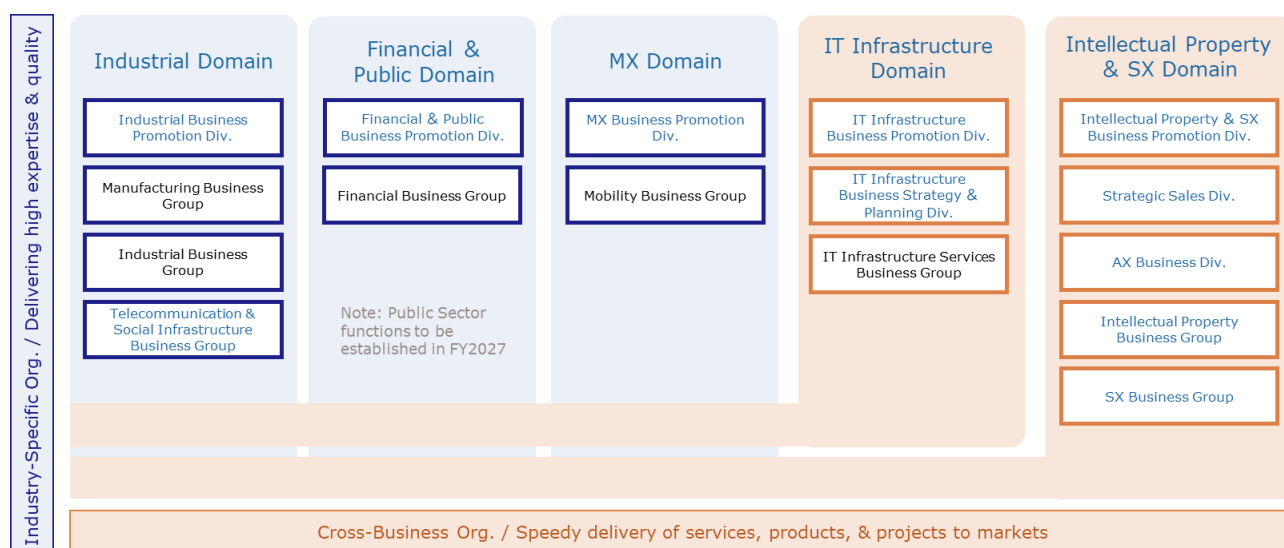
1. Overview of the Structural Reforms

- In conjunction with the launch of the "Next Midium-Term Management Plan (FY2026–2030)," starting in FY2026, the Company will reorganize part of its current organizational structure, reflecting the plans and measures currently under formulation.
This reorganization is designed to accelerate the evolution into an offering-based business model founded on autonomous management, while also anticipating the business integration with Net One Systems Co., Ltd.
- We will reorganize our structure to enable proposals directly to customer CXOs and business unit heads. This will be achieved by combining and utilizing the Company's proprietary intellectual property with third-party services, based on expertise specialized in specific industries and operations.
- The Company will reorganize the organizations under direct control and the Group Corporate functions to promote company-wide strategies and accelerate the sophistication, standardization, and efficiency of cross-functional operations.

2. Details of the Structural Reforms (Effective April 1, 2026)

Reorganization within the Business Group

- The Company will redesign the organization into a dual-axis structure of "Industry-Specific" and "Cross-Business" functions. This change aims to maximize the value delivered to the market and the speed of delivery, while further deepening our industry expertise.
- In order to promote autonomous management, we will newly establish "Domains" to bundle the Business Groups, and set up a "Business Promotion Div." for each Domain.



Note:

Blue text indicates newly established organizations, while black text indicates organizations reorganized from the current structure.

MX: Mobility Transformation SX: Social Transformation AX: AI Transformation