



Sumisho Computer Systems Corporation

Supplementary Information (Data Book)

2011/4/1-2011/6/30

Index

Financial Review【Consolidated】

I. External Sales and Operating Income by Reported Segments	P.1
II. External Sales and Operating Income by Reported Segments - Quarterly trends	P.2
III. Sales by segment	P.3
IV. Sales by segment-Quarterly trends	P.4
V. Sales by customer industry	P.5
VI. Sales by segment & customer industry (Software Development)	P.6
VII. Sales by segment & customer industry (Information Processing)	P.7
VIII. Sales by segment & customer industry (Packaged Software/Hardware)	P.8
IX. Amount of orders accepted and backlog (Software Development)	P.9
X. Sales of Packaged Software and Hardware	
XI. Sales to Sumitomo Corporation and Sumitomo Group Companies	
XII. Quarterly trends	P.10

Caution Concerning Forward-Looking Statements

This report includes forward-looking statements relating to our future plans, objectives, expectations and intentions.

The forward-looking statements reflect management's current assumptions and expectations of future events, and accordingly, they are inherently susceptible to uncertainties and changes in circumstances and are not guarantees of future performance.

Actual results may differ materially, for a wide range of possible reasons, including general industry and market conditions and general international economic conditions. In light of the many risks and uncertainties, you are advised not to put undue reliance on these statements. The Company is under no obligation – and expressly disclaims any such obligation – to update or alter its forward-looking statements.

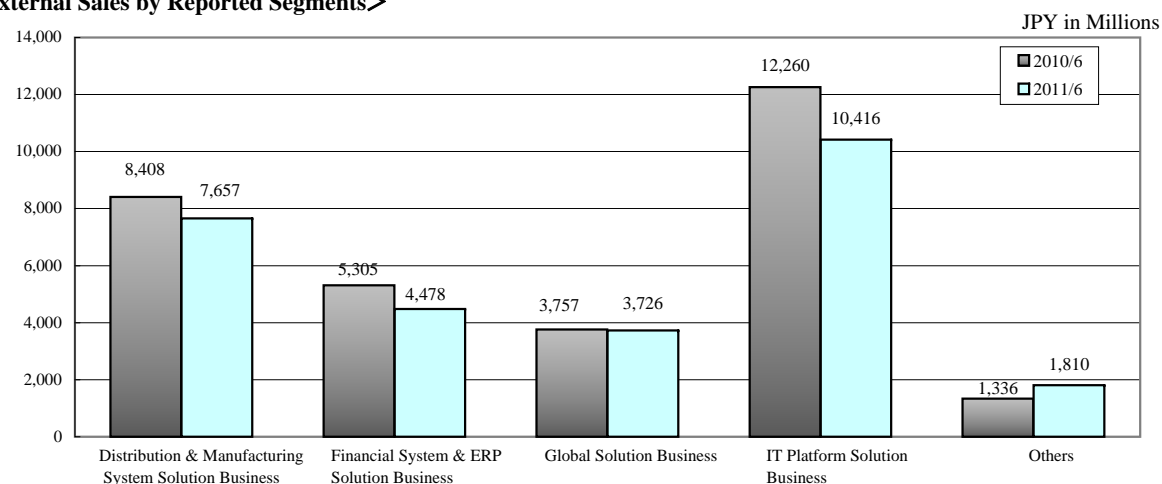
I. External Sales and Operating Income by Reported Segments

JPY in Millions

	2010/6			2011/6			Increase/Decrease		
	External Sales	%	Operating Income	External Sales	%	Operating Income	External Sales	%	Operating Income
Distribution & Manufacturing System Solution Business	8,408	27.0	183	7,657	27.3	△ 41	△ 751	△ 8.9	△ 224
Financial System & ERP Solution Business	5,305	17.1	41	4,478	15.9	△ 179	△ 827	△ 15.6	△ 220
Global Solution Business	3,757	12.1	421	3,726	13.3	397	△ 31	△ 0.8	△ 23
IT Platform Solution Business	12,260	39.5	751	10,416	37.1	207	△ 1,844	△ 15.0	△ 543
Others	1,336	4.3	△ 114	1,810	6.4	△ 6	474	35.5	107
Adjustments	-	-	△ 115	-	-	△ 98	-	-	17
Total	31,069	100.0	1,167	28,089	100.0	279	△ 2,980	△ 9.6	△ 888

* Adjustments for operating income have been made in unallocated general corporate expenses and others.

<External Sales by Reported Segments>



II . External Sales and Operating Income by Reported Segments - Quarterly trends

JPY in Millions

2012/3	Q1		Q2		Q3		Q4		Total	
	External Sales %	Operating Income	External Sales %	Operating Income	External Sales %	Operating Income	External Sales %	Operating Income	External Sales %	Operating Income
Distribution & Manufacturing System Solution Business	7,657	△ 41								
	27.3	-								
Financial System & ERP Solution Business	4,478	△ 179								
	15.9	-								
Global Solution Business	3,726	397								
	13.3	-								
IT Platform Solution Business	10,416	207								
	37.1	-								
Others	1,810	△ 6								
	6.4	-								
Adjustments	-	△ 98								
	-	-								
Total	28,089	279								
	100.0	-								

JPY in Millions

2011/3	Q1		Q2		Q3		Q4		Total	
	External Sales %	Operating Income	External Sales %	Operating Income	External Sales %	Operating Income	External Sales %	Operating Income	External Sales %	Operating Income
Distribution & Manufacturing System Solution Business	8,408	183	9,015	421	8,029	246	11,019	1,175	36,574	2,022
	27.0	-	28.6	-	25.9	-	28.1	-	27.5	-
Financial System & ERP Solution Business	5,305	41	6,331	21	6,284	93	7,536	491	26,240	708
	17.1	-	20.1	-	20.3	-	19.2	-	19.7	-
Global Solution Business	3,757	421	3,146	332	3,786	385	3,746	410	13,641	1,496
	12.1	-	10.0	-	12.2	-	9.5	-	10.3	-
IT Platform Solution Business	12,260	751	11,216	637	11,357	580	13,603	1,273	48,337	3,248
	39.5	-	35.5	-	36.7	-	34.7	-	36.4	-
Others	1,336	△ 114	1,839	30	1,513	△ 28	3,344	357	8,046	237
	4.3	-	5.8	-	4.9	-	8.5	-	6.1	-
Adjustments	-	△ 115	-	△ 149	-	△ 137	-	△ 233	-	△ 636
	-	-	-	-	-	-	-	-	-	-
Total	31,069	1,167	31,548	1,293	30,971	1,140	39,250	3,475	132,840	7,076
	100.0	-	100.0	-	100.0	-	100.0	-	100.0	-

* Adjustments for operating income have been made in unallocated general corporate expenses and others.

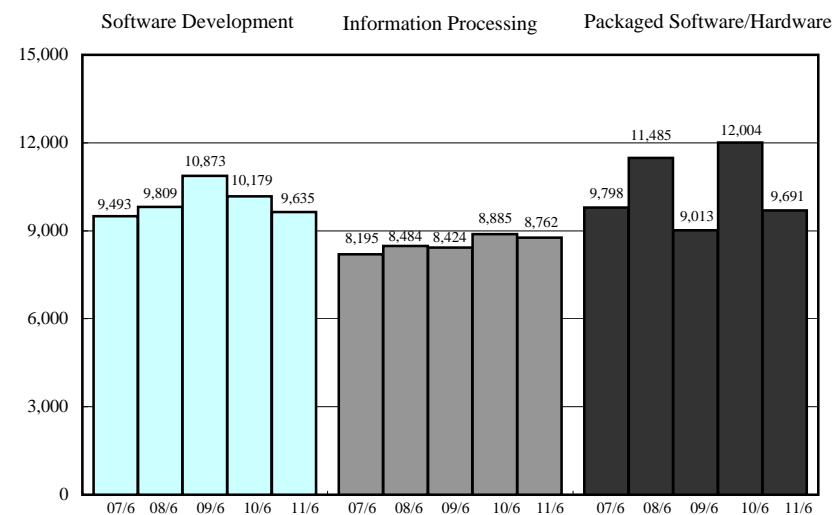
* We made a partial amendment in external sales and operating income of first quarter of the previous fiscal year due to the rearrangement of reported segments.

III . Sales by segment

JPY in Millions

	2010/6		2011/6		Increase/Decrease	
	Amount	%	Amount	%	Amount	YoY changes(%)
Software Development	10,179	32.8	9,635	34.3	△ 544	△ 5.3
Information Processing	8,885	28.6	8,762	31.2	△ 122	△ 1.4
Packaged Software/Hardware	12,004	38.6	9,691	34.5	△ 2,312	△ 19.3
Total	31,069	100.0	28,089	100.0	△ 2,980	△ 9.6

JPY in Millions



【Software Development】

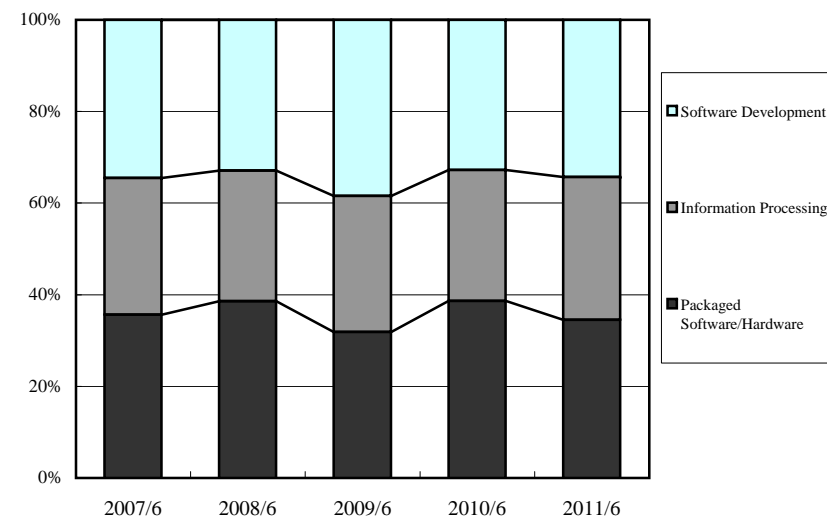
In Software Development, sales decreased 5.3% from the same period last year, to JPY 9,635 million, due mainly to a decrease in sales to financial institutions, communications and the service industry, which offset an increase in sales to manufacturers and distributors.

【Information Processing】

In Information Processing, sales decreased 1.4% from the same period last year, to JPY 8,762 million, due mainly to a decrease in sales to distributors.

【Packaged Software/Hardware】

In Packaged Software/Hardware segment, sales decreased 19.3% from the same period last year, to JPY 9,691 million, due mainly to a decrease in sales to communications and the service industry.

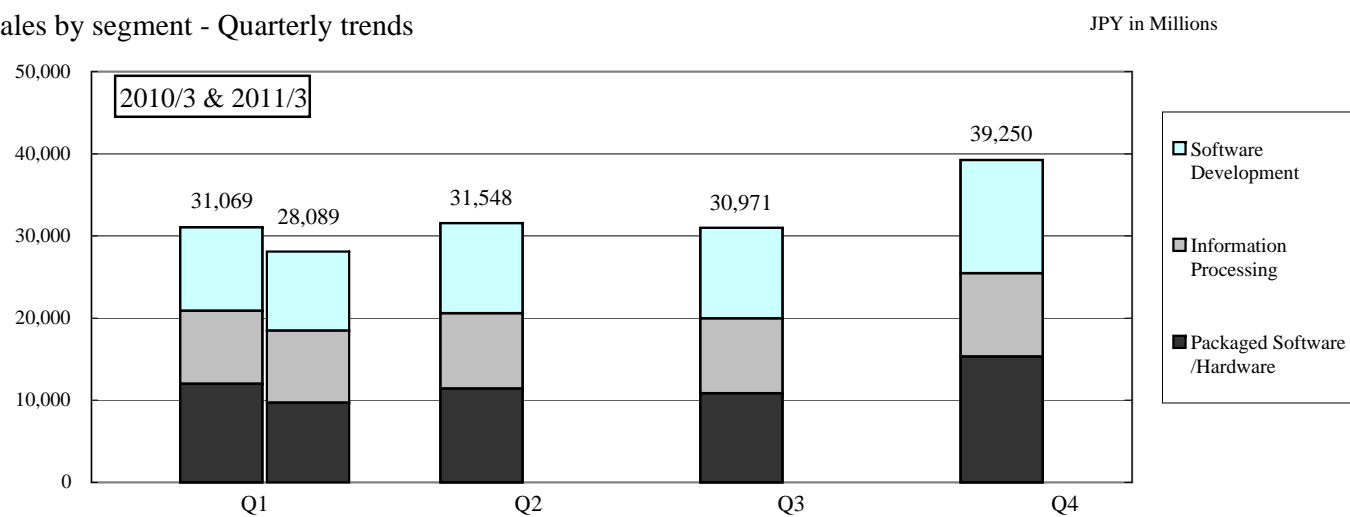


IV . Sales by segment - Quarterly trends

		Q1		Q2		Q3		Q4		Total	
		Amount	%	Amount	%	Amount	%	Amount	%	Amount	%
2012/3	Sales	28,089	△ 9.6								
	Software Development	9,635	△ 5.3								
	Information Processing	8,762	△ 1.4								
	Packaged Software/Hardware	9,691	△ 19.3								
2011/3	Sales	31,069	(23.4) 9.7	31,548	(23.8) △ 4.8	30,971	(23.3) 4.1	39,250	(29.5) 8.6	132,840	(100.0) 4.3
	Software Development	10,179	(22.1) △ 6.4	10,963	(23.9) △ 6.3	11,026	(24.0) 12.0	13,794	(30.0) 25.9	45,964	(100.0) 6.0
	Information Processing	8,885	(23.8) 5.5	9,164	(24.6) △ 1.6	9,099	(24.4) 1.9	10,136	(27.2) 7.6	37,286	(100.0) 3.3
	Packaged Software/Hardware	12,004	(24.2) 33.2	11,421	(23.0) △ 5.7	10,844	(21.9) △ 1.1	15,319	(30.9) △ 2.8	49,589	(100.0) 3.6

Percentage columns show year-on-year sales growth. Figures in bracket represent the percentage of sales out of annual sales.

Sales by segment - Quarterly trends

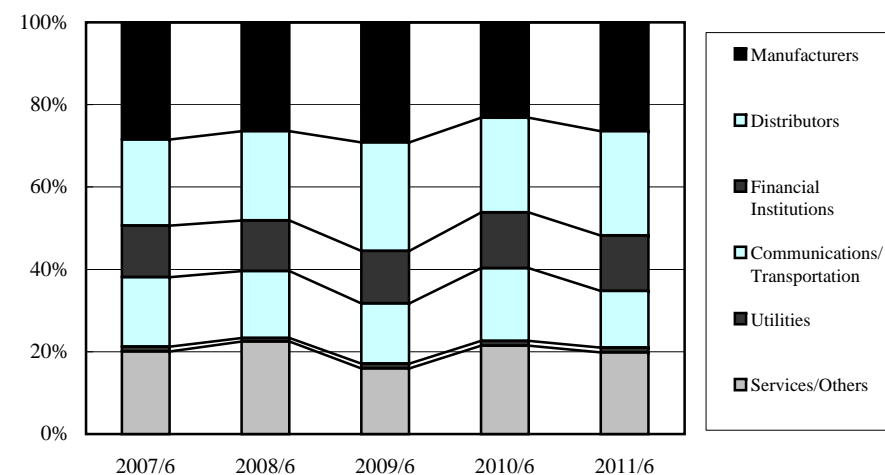
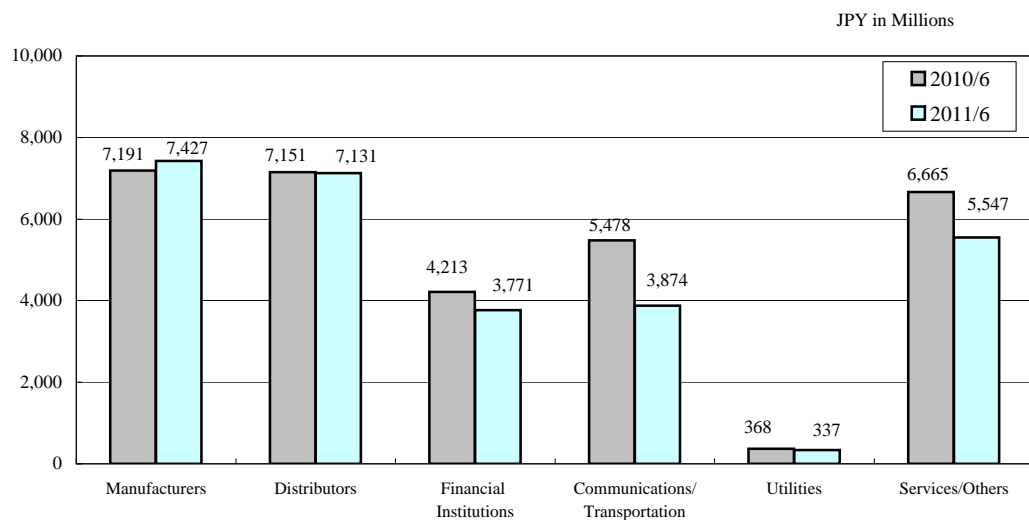


V. Sales by customer industry

JPY in Millions

	2010/6		2011/6		Increase/Decrease	
	Amount	%	Amount	%	Amount	YoY changes(%)
Manufacturers	7,191	23.1	7,427	26.4	236	3.3
Distributors	7,151	23.0	7,131	25.4	△ 20	△ 0.3
Financial Institutions	4,213	13.6	3,771	13.4	△ 441	△ 10.5
Banks	1,570	5.1	1,463	5.2	△ 107	△ 6.8
Securities Firms	468	1.5	487	1.7	18	4.0
Shopping Credit/ Leasing Companies	1,018	3.3	568	2.0	△ 450	△ 44.2
Insurance Companies	1,155	3.7	1,252	4.5	97	8.4
Communications/Transportation	5,478	17.6	3,874	13.8	△ 1,604	△ 29.3
Utilities	368	1.2	337	1.2	△ 31	△ 8.6
Services/Others	6,665	21.5	5,547	19.8	△ 1,117	△ 16.8
Total	31,069	100.0	28,089	100.0	△ 2,980	△ 9.6

※We made a partial amendment in previously disclosed data.

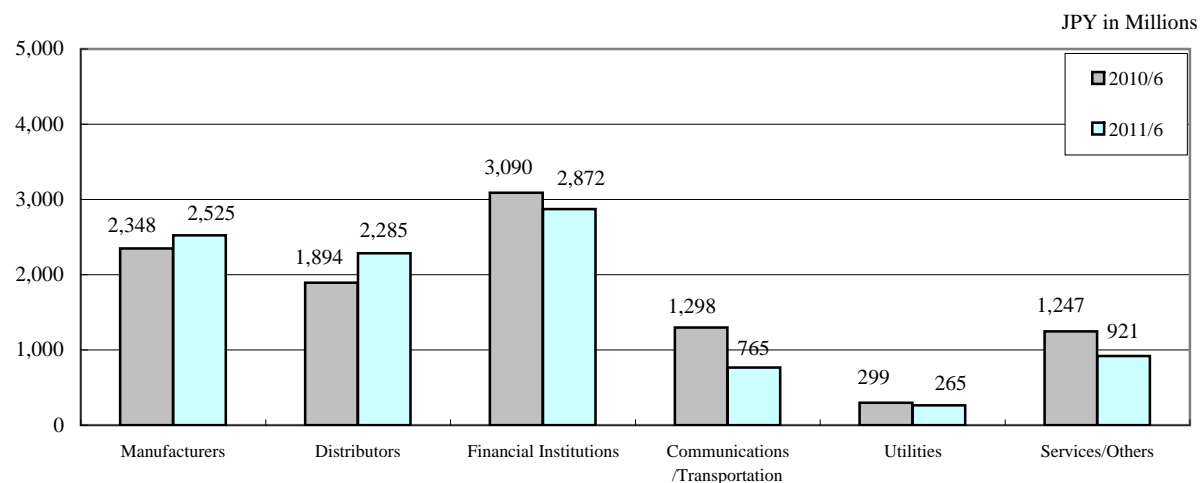


VI. Sales by segment & customer industry (Software Development)

JPY in Millions

	2010/6		2011/6		Increase/Decrease	
	Amount	%	Amount	%	Amount	YoY changes(%)
Manufacturers	2,348	23.1	2,525	26.2	176	7.5
Distributors	1,894	18.6	2,285	23.7	390	20.6
Financial Institutions	3,090	30.3	2,872	29.8	△ 217	△ 7.0
Banks	978	9.6	1,055	11.0	76	7.8
Securities Firms	308	3.0	341	3.5	32	10.5
Shopping Credit/ Leasing Companies	710	7.0	305	3.2	△ 404	△ 57.0
Insurance Companies	1,092	10.7	1,171	12.1	78	7.2
Communications /Transportation	1,298	12.8	765	7.9	△ 533	△ 41.1
Utilities	299	2.9	265	2.8	△ 33	△ 11.3
Services/Others	1,247	12.3	921	9.6	△ 326	△ 26.1
Total	10,179	100.0	9,635	100.0	△ 544	△ 5.3

※We made a partial amendment in previously disclosed data.



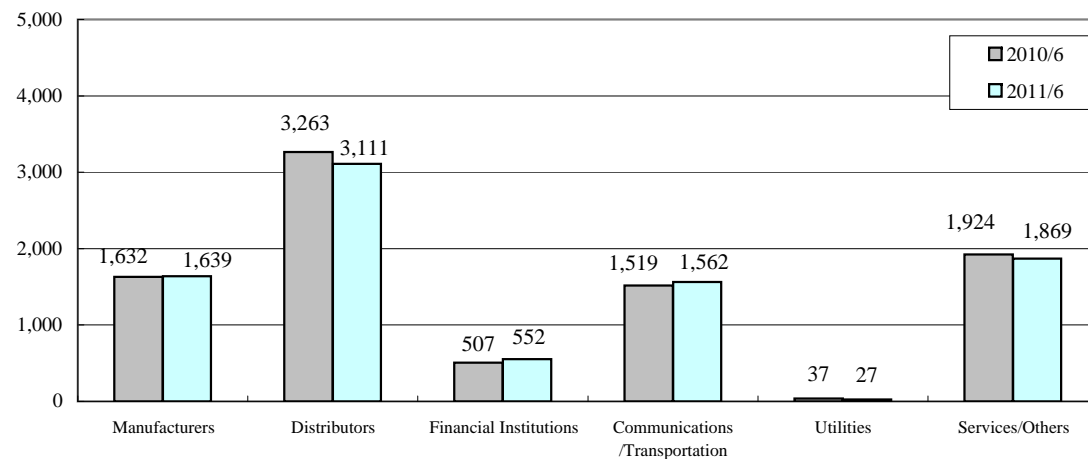
VII. Sales by segment & customer industry (Information Processing)

JPY in Millions

	2010/6		2011/6		Increase/Decrease	
	Amount	%	Amount	%	Amount	YoY changes(%)
Manufacturers	1,632	18.4	1,639	18.7	7	0.4
Distributors	3,263	36.7	3,111	35.5	△ 152	△ 4.7
Financial Institutions	507	5.7	552	6.3	44	8.9
Banks	195	2.2	202	2.3	6	3.6
Securities Firms	82	0.9	113	1.3	30	36.7
Shopping Credit/ Leasing Companies	205	2.3	199	2.3	△ 5	△ 2.9
Insurance Companies	24	0.3	37	0.4	13	55.4
Communications /Transportation	1,519	17.1	1,562	17.8	42	2.8
Utilities	37	0.4	27	0.3	△ 10	△ 27.1
Services/Others	1,924	21.7	1,869	21.4	△ 55	△ 2.9
Total	8,885	100.0	8,762	100.0	△ 122	△ 1.4

※We made a partial amendment in previously disclosed data.

JPY in Millions



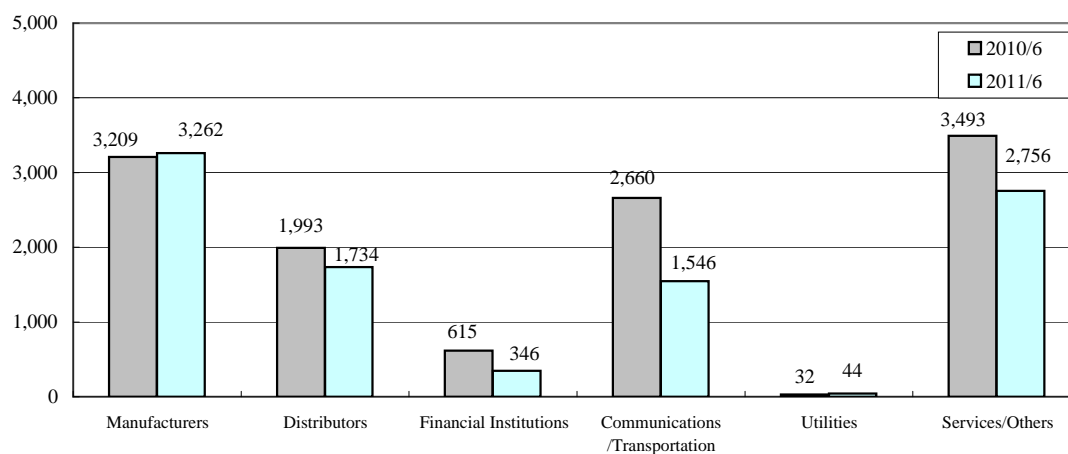
VIII. Sales by segment & customer industry (Packaged Software/Hardware)

JPY in Millions

	2010/6		2011/6		Increase/Decrease	
	Amount	%	Amount	%	Amount	YoY changes(%)
Manufacturers	3,209	26.7	3,262	33.6	52	1.6
Distributors	1,993	16.6	1,734	17.9	△ 258	△ 13.0
Financial Institutions	615	5.1	346	3.6	△ 268	△ 43.7
Banks	397	3.3	206	2.1	△ 190	△ 48.0
Securities Firms	76	0.6	32	0.3	△ 44	△ 57.6
Shopping Credit/ Leasing Companies	102	0.9	63	0.7	△ 39	△ 38.2
Insurance Companies	39	0.3	44	0.5	5	12.9
Communications /Transportation	2,660	22.2	1,546	16.0	△ 1,113	△ 41.9
Utilities	32	0.3	44	0.5	12	37.3
Services/Others	3,493	29.1	2,756	28.4	△ 736	△ 21.1
Total	12,004	100.0	9,691	100.0	△ 2,312	△ 19.3

※We made a partial amendment in previously disclosed data.

JPY in Millions



IX . Amount of orders accepted and backlog (Software Development)

JPY in Millions

		Q1	Q2	Q3	Q4
2012/3	Orders accepted	10,806			
	Backlog	9,666			
2011/3	Orders accepted	11,568	11,607	10,866	12,169
	Backlog	9,635	10,280	10,119	8,494
2010/3	Orders accepted	16,438	9,425	9,644	9,084
	Backlog	12,595	10,319	10,118	8,247

X . Sales of Packaged Software and Hardware

JPY in Millions

	2010/6		2011/6		Increase/Decrease	
	Amount	%	Amount	%	Amount	YoY changes(%)
Hardware	7,426	61.9	6,080	62.7	△ 1,346	△ 18.1
Packaged Software	4,577	38.1	3,610	37.3	△ 966	△ 21.1
Total	12,004	100.0	9,691	100.0	△ 2,312	△ 19.3

XI . Sales to Sumitomo Corporation and Sumitomo Group Companies

JPY in Millions

	2010/6		2011/6		Increase/Decrease	
	Amount	%	Amount	%	Amount	YoY changes(%)
Sumitomo Corporation	3,501	11.3	3,172	11.3	△ 329	△ 9.4
Sumitomo Group Companies*	11,035	35.5	9,919	35.3	△ 1,115	△ 10.1

* Sumitomo Group includes Sumitomo Corporation and its Group Companies

XII . Quarterly trends

JPY in millions

Figures in brackets show percentage out of quarterly sales.

40969	Q1 (2011.4~6)	
	Amount	%
Net sales	28,089	100.0
Software Development	9,635	(34.3)
Information Processing	8,762	(31.2)
Packaged Software / Hardware	9,691	(34.5)
Cost of sales	22,297	79.4
Gross Profit	5,791	20.6
S.G.&A.Expenses	5,512	19.6
Operating Income	279	1.0
Ordinary Income	2,637	9.4
Income before income taxes	2,577	9.2
Net Income	1,520	5.4

1st half forecast (2011.4~9)	
Amount	%
62,500	100.0
-	-
-	-
-	-
48,900	78.2
13,600	21.8
11,300	18.1
2,300	3.7
4,000	6.4
-	-
2,300	3.7

full year forecast (2011.4~2012.3)	
Amount	%
134,000	100.0
-	-
-	-
-	-
103,800	77.5
30,200	22.5
22,500	16.8
7,700	5.7
9,600	7.2
-	-
5,300	4.0

40603	Q1 (2010.4~6)		Q2 (2010.7~9)		Q3 (2010.10~12)		Q4 (2011.1~3)	
	Amount	%	Amount	%	Amount	%	Amount	%
Net sales	31,069	100.0	31,548	100.0	30,971	100.0	39,250	100.0
Software Development	10,179	(32.8)	10,963	(34.8)	11,026	(35.6)	13,794	(35.2)
Information Processing	8,885	(28.6)	9,164	(29.0)	9,099	(29.4)	10,136	(25.8)
Packaged Software / Hardware	12,004	(38.6)	11,421	(36.2)	10,844	(35.0)	15,319	(39.0)
Cost of sales	24,296	78.2	24,785	78.6	24,366	78.7	30,344	77.3
Gross Profit	6,773	21.8	6,763	21.4	6,604	21.3	8,906	22.7
S.G.&A.Expenses	5,605	18.0	5,469	17.3	5,464	17.6	5,431	13.8
Operating Income	1,167	3.8	1,293	4.1	1,140	3.7	3,475	8.9
Ordinary Income	1,266	4.1	1,320	4.2	1,210	3.9	3,545	9.0
Income before income taxes	1,494	4.8	1,153	3.7	1,081	3.5	3,225	8.2
Net Income	923	3.0	617	2.0	628	2.0	1,633	4.2

1st half (2010.4~9)		Q3 total (2010.4~12)		full year (2010.4~2011.3)	
Amount	%	Amount	%	Amount	%
62,618	100.0	93,589	100.0	132,840	100.0
21,142	(33.8)	32,169	(34.4)	45,964	(34.6)
18,049	(28.8)	27,149	(29.0)	37,286	(28.1)
23,425	(37.4)	34,269	(36.6)	49,589	(37.3)
49,081	78.4	73,447	78.5	103,792	78.1
13,536	21.6	20,141	21.5	29,048	21.9
11,075	17.7	16,540	17.7	21,971	16.5
2,461	3.9	3,601	3.8	7,076	5.3
2,587	4.1	3,798	4.1	7,343	5.5
2,647	4.2	3,729	4.0	6,954	5.2
1,541	2.5	2,170	2.3	3,803	2.9

Increase / Decrease	Q1	
	Amount	%
Net sales	△ 2,980	△ 9.6
Software Development	△ 544	△ 5.3
Information Processing	△ 122	△ 1.4
Packaged Software / Hardware	△ 2,312	△ 19.3
Cost of sales	△ 1,998	△ 8.2
Gross Profit	△ 981	△ 14.5
S.G.&A.Expenses	△ 92	△ 1.7
Operating Income	△ 888	△ 76.1
Ordinary Income	1,370	108.2
Income before income taxes	1,082	72.4
Net Income	596	64.6