

Supplementary Information (Data Book)
2008/4/1-2008/12/31

Index

Financial Review【Consolidated】

I. Sales by customer industry	P. 1
II. Sales by solution	P. 2
III. Sales by segment	P. 3
IV. Sales by solution & customer industry (Industrial Solutions)	P. 4
V. Sales by solution & customer industry (ERP Solutions)	P. 5
VI. Sales by solution & customer industry (Platform Solutions)	P. 6
VII. Sales by segment & customer industry (Software Development)	P. 7
VIII. Sales by solution-Quarterly trends	P. 8
IX. Sales by segment-Quarterly trends	P. 9
X. Amount of orders accepted and backlog (Software Development)	P.10
XI. Sales of Software Package and Hardware	
XII. Sales to Sumitomo Corp. and Sumitomo Group Companies	
XIII. Quarterly trends	P.11

Notice Concerning Forward-Looking Statements

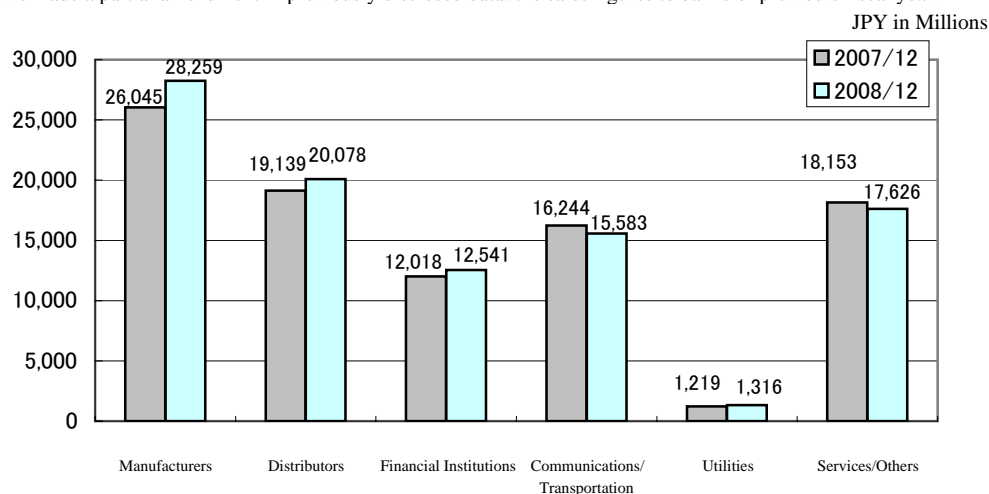
This report includes forward-looking statements relating to our future plans, objectives, expectations and intentions. The forward-looking statements reflect management's current assumptions and expectations of future events, and accordingly, they are inherently susceptible to uncertainties and changes in circumstances and are not guarantees of future performance. Actual results may differ materially, for a wide range of possible reasons, including general industry and market conditions and general international economic conditions. In light of the many risks and uncertainties, you are advised not to put undue reliance on these statements. The Company is under no obligation – and expressly disclaims any such obligation – to update or alter its forward-looking statements.

I .Sales by customer industry

JPY in Millions

	FY2006		FY2007		Increase/Decrease	
	Amount	%	Amount	%	Amount	YoY changes(%)
Manufacturers	26,045	28.1	28,259	29.6	2,213	8.5
Distributors	19,139	20.6	20,078	21.0	938	4.9
Financial Institutions	12,018	12.9	12,541	13.1	522	4.3
Banks	3,997	4.3	4,555	4.8	557	13.9
Securities Firms	3,889	4.2	2,630	2.8	△ 1,258	△ 32.4
Leasing Companies	1,823	2.0	2,284	2.4	461	25.3
Insurance Companies	2,307	2.5	3,070	3.2	762	33.0
Communications/Transportation	16,244	17.5	15,583	16.3	△ 660	△ 4.1
Utilities	1,219	1.3	1,316	1.4	97	8.0
Services/Others	18,153	19.6	17,626	18.5	△ 526	△ 2.9
Total	92,821	100.0	95,405	100.0	2,583	2.8

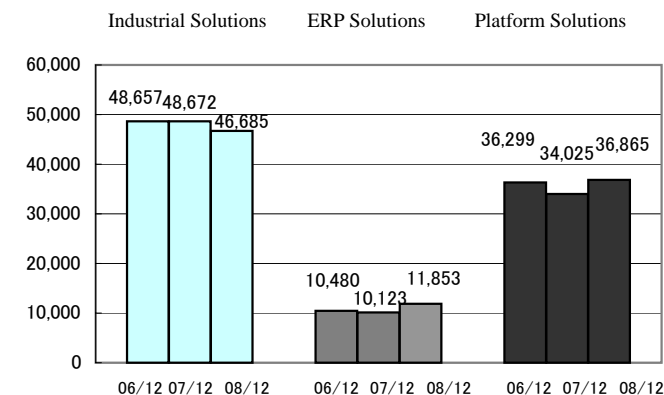
※We made a partial amendment in previously disclosed data: the sales figures to banks of previous fiscal year.



II. Sales by solution

JPY in Millions

	2007/9		2008/09		Increase/Decrease	
	Amount	%	Amount	%	Amount	YoY changes(%)
Industrial Solutions	48,672	52.4	46,685	48.9	△ 1,987	△ 4.1
ERP Solutions	10,123	10.9	11,853	12.4	1,730	17.1
Platform Solutions	34,025	36.7	36,865	38.7	2,840	8.3
Total	92,821	100.0	95,405	100.0	2,583	2.8



【Industrial Solutions】

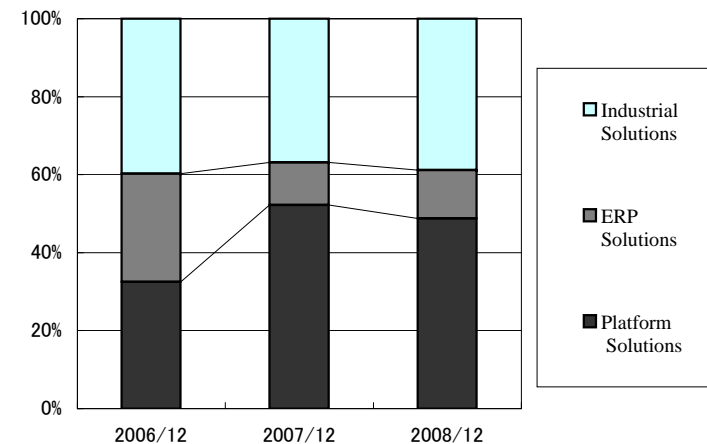
In industrial solutions, sales decreased by 4.1% from the same period of last year to JPY 46,685 million, mainly due to decrease in sales of software package/hardware as well as diminished business with securities companies, both offsetting the increased number of software development businesses with manufactures and insurance companies.

【ERP Solutions】

In ERP solutions, businesses involving ProActive as well as business with manufacturers started to gain momentum, which contributed to sales increase by 17.0% from the same period last year to JPY 11,853 million.

【Platform Solutions】

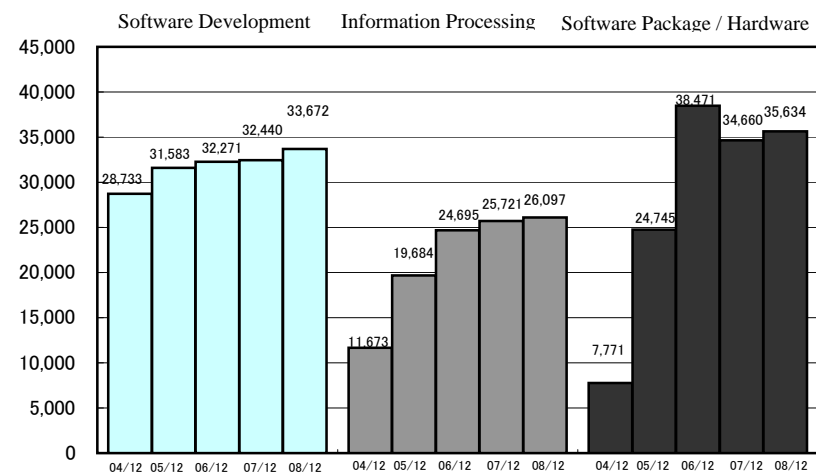
In Platform solutions, sales increased by 8.3% from the same period last year to JPY 36,865 million, reflecting the impact of a large project involving High Performance Computing, increasing number of product distribution businesses, as well as growing businesses with banks, communications and transportation industries.



III.Sales by segment

JPY in Millions

	FY2006		FY2007		Increase/Decrease	
	Amount	%	Amount	%	Amount	YoY changes(%)
Software Development	32,440	35.0	33,672	35.3	1,232	3.8
Information Processing	25,721	27.7	26,097	27.4	376	1.5
Software Package / Hardware	34,660	37.3	35,634	37.3	974	2.8
Total	92,821	100.0	95,405	100.0	2,583	2.8



【Software Development】

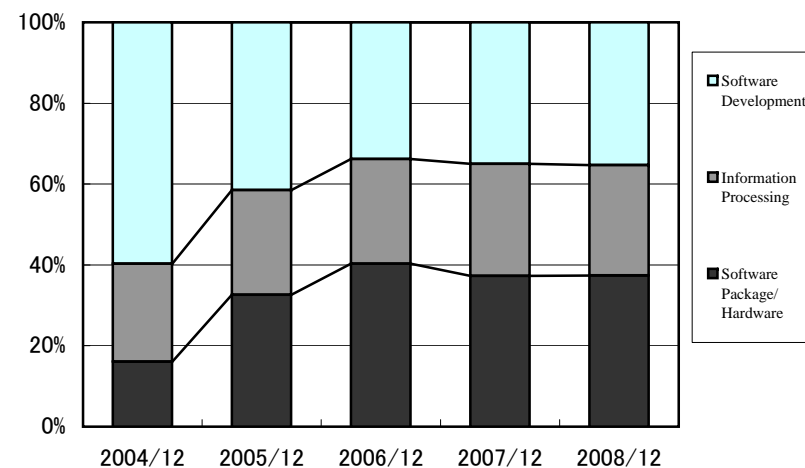
In Software development, decrease in business with securities companies was offset by the increase in businesses with manufacturers and insurance companies for the development of ERP systems. As a result, the sales increased by 3.8% from the same period last year to JPY 33,672 million.

【Information Processing】

In Information Processing, sales increased by 1.5% from the same period last year to JPY 26,097 million, due mainly to the increase in maintenance fee resulting from the sales of hardware systems in the previous term.

【Software Package/Hardware】

In Software Package/Hardware segment, a large project associated with High Performance Computing as well as growth in product distribution business offset sagging sales trend in infrastructure engineering business. As a result, the sales decreased by 2.8% from the same period last year to JPY 35,634 million.



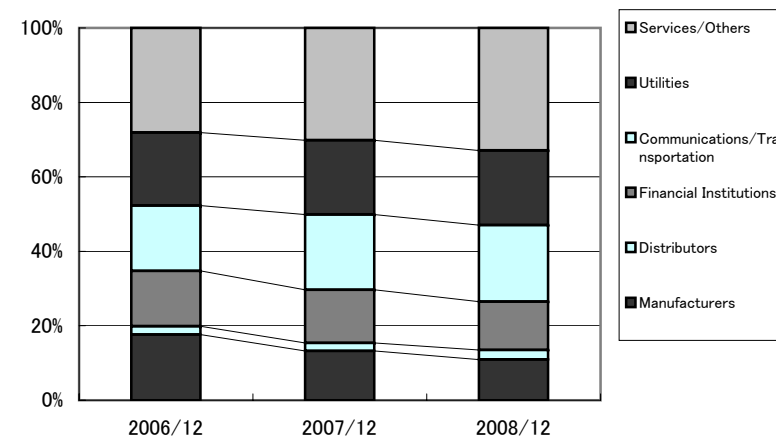
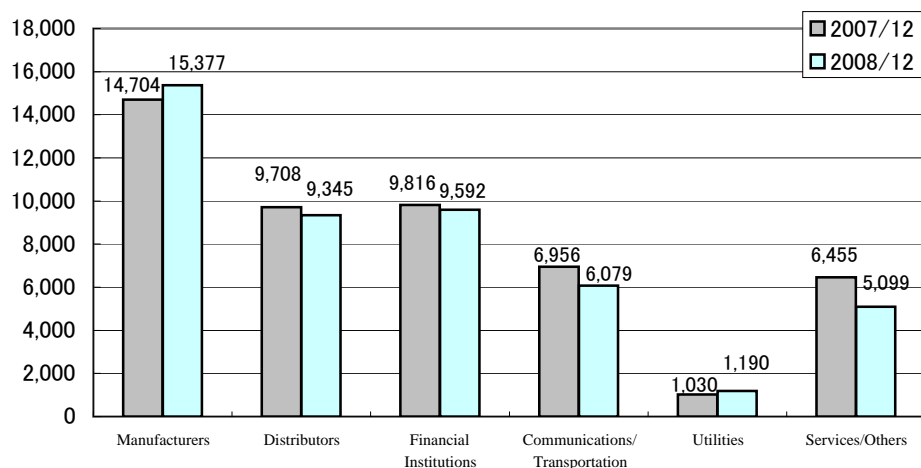
IV.Sales by solution & customer industry (Industrial Solutions)

JPY in Millions

	FY2006		FY2007		Increase/Decrease	
	Amount	%	Amount	%	Amount	YoY changes(%)
Manufacturers	14,704	30.2	15,377	32.9	672	4.6
Distributors	9,708	19.9	9,345	20.0	△ 363	△ 3.7
Financial Institutions	9,816	20.2	9,592	20.5	△ 224	△ 2.3
Banks	3,329	6.8	3,187	6.8	△ 142	△ 4.3
Securities Firms	3,419	7.0	2,086	4.5	△ 1,333	△ 39.0
Leasing Companies	864	1.8	1,399	3.0	534	61.8
Insurance Companies	2,202	4.5	2,919	6.3	716	32.5
Communications/Transportation	6,956	14.3	6,079	13.0	△ 876	△ 12.6
Utilities	1,030	2.1	1,190	2.6	160	15.6
Services/Others	6,455	13.3	5,099	11.0	△ 1,356	△ 21.0
Total	48,672	100.0	46,685	100.0	△ 1,987	△ 4.1

※We made a partial amendment in previously disclosed data: the sales figures to banks of previous fiscal year.

JPY in Millions



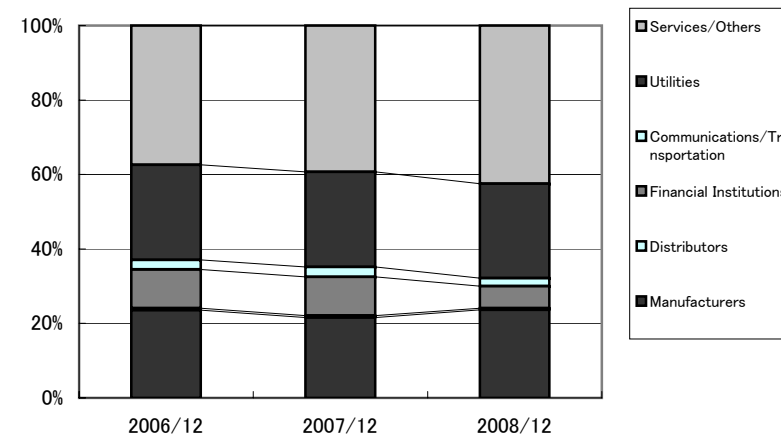
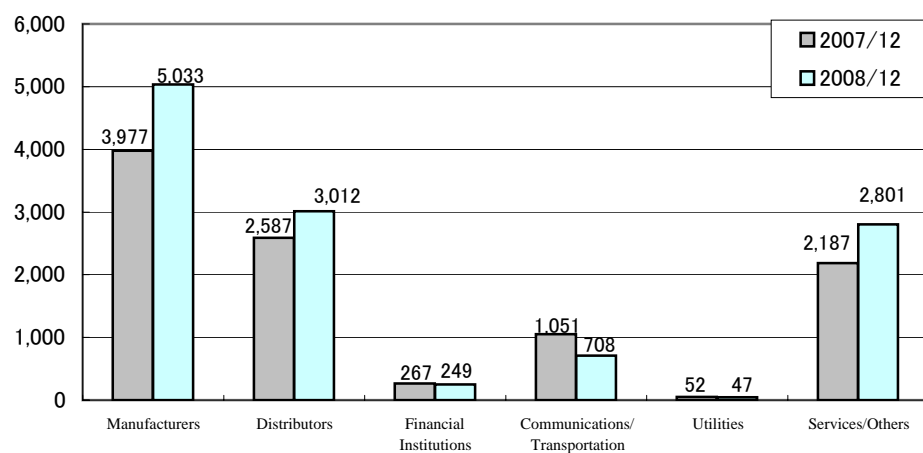
V.Sales by solution & customer industry (ERP Solutions)

JPY in Millions

	FY2006		FY2007		Increase/Decrease	
	Amount	%	Amount	%	Amount	YoY changes(%)
Manufacturers	3,977	39.3	5,033	42.5	1,055	26.5
Distributors	2,587	25.6	3,012	25.4	425	16.4
Financial Institutions	267	2.6	249	2.1	△ 17	△ 6.6
Banks	143	1.4	93	0.8	△ 50	△ 34.9
Securities Firms	31	0.3	47	0.4	15	50.2
Leasing Companies	85	0.8	78	0.6	△ 7	△ 8.9
Insurance Companies	6	0.1	30	0.3	24	372.1
Communications/Transportation	1,051	10.4	708	6.0	△ 342	△ 32.6
Utilities	52	0.5	47	0.4	△ 4	△ 8.5
Services/Others	2,187	21.6	2,801	23.6	614	28.1
Total	10,123	100.0	11,853	100.0	1,730	17.1

※We made a partial amendment in previously disclosed data: the sales figures to banks of previous fiscal year.

JPY in Millions



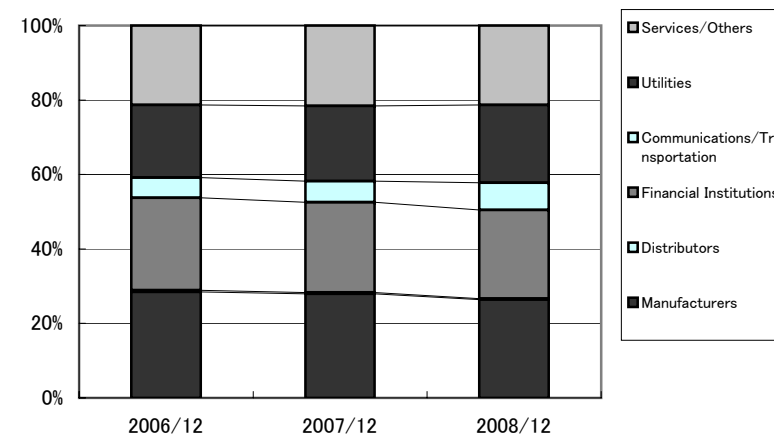
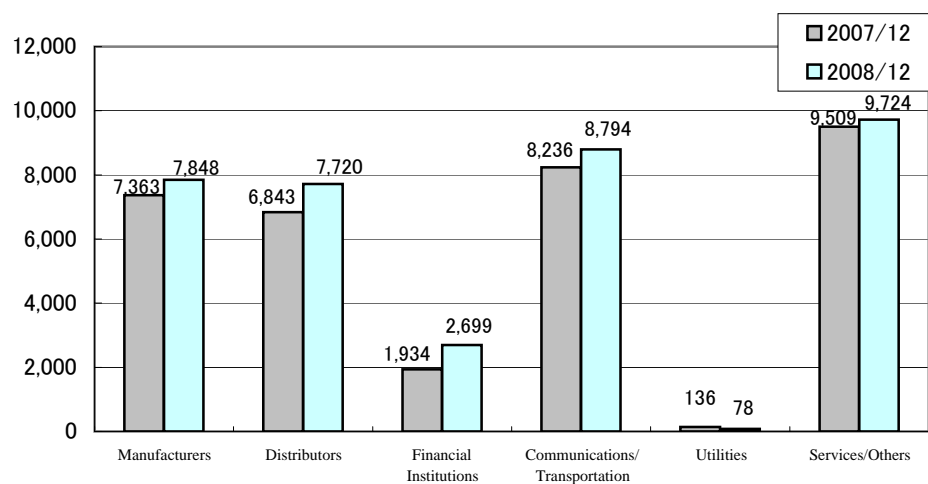
VI.Sales by solution & customer industry (Platform Solutions)

JPY in Millions

	FY2006		FY2007		Increase/Decrease	
	Amount	%	Amount	%	Amount	YoY changes(%)
Manufacturers	7,363	21.6	7,848	21.3	485	6.6
Distributors	6,843	20.1	7,720	20.9	876	12.8
Financial Institutions	1,934	5.7	2,699	7.3	764	39.5
Banks	524	1.5	1,274	3.5	749	142.8
Securities Firms	438	1.3	497	1.3	58	13.4
Leasing Companies	872	2.6	806	2.2	△ 65	△ 7.5
Insurance Companies	98	0.3	120	0.3	21	22.2
Communications/Transportation	8,236	24.2	8,794	23.9	558	6.8
Utilities	136	0.4	78	0.2	△ 58	△ 43.0
Services/Others	9,509	28.0	9,724	26.4	214	2.3
Total	34,025	100.0	36,865	100.0	2,840	8.3

※We made a partial amendment in previously disclosed data: the sales figures to banks of previous fiscal year.

JPY in Millions

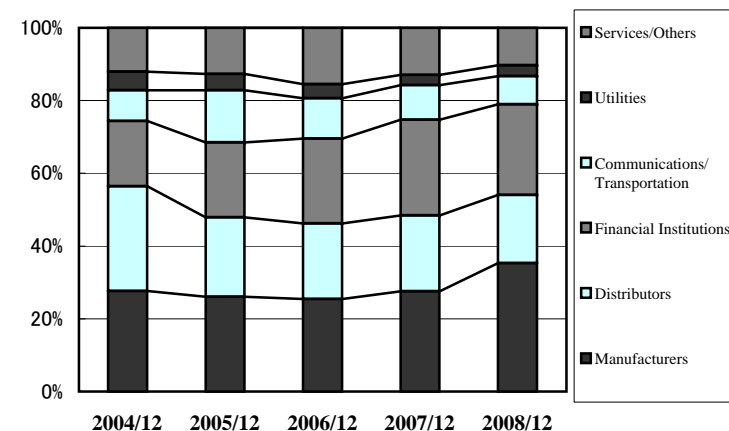
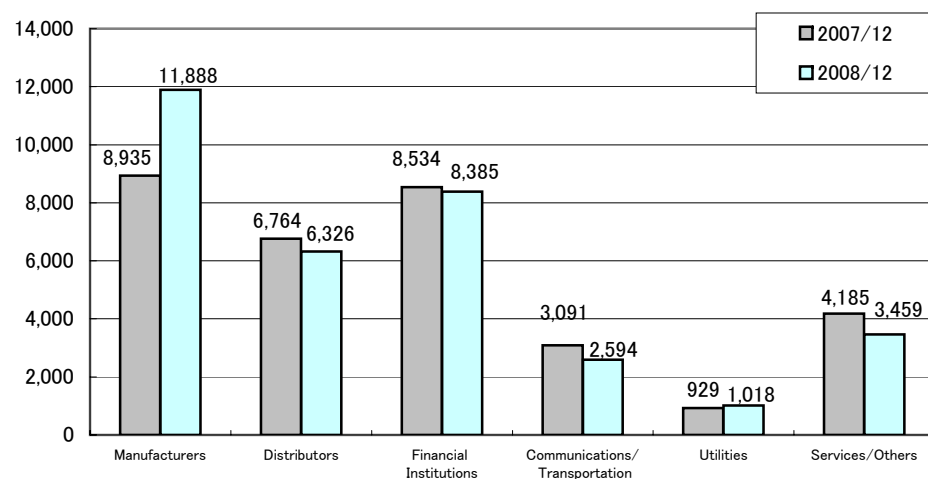


VII.Sales by segment & customer industry (Software Development)

JPY in Millions

	FY2006		FY2007		Increase/Decrease	
	Amount	%	Amount	%	Amount	YoY changes(%)
Manufacturers	8,935	27.5	11,888	35.3	2,953	33.1
Distributors	6,764	20.9	6,326	18.8	△ 437	△ 6.5
Financial Institutions	8,534	26.3	8,385	24.9	△ 149	△ 1.7
Banks	2,536	7.8	2,548	7.6	12	0.5
Securities Firms	3,354	10.3	2,040	6.1	△ 1,314	△ 39.2
Leasing Companies	487	1.5	975	2.9	487	99.9
Insurance Companies	2,155	6.6	2,820	8.4	665	30.9
Communications/Transportation	3,091	9.5	2,594	7.7	△ 496	△ 16.1
Utilities	929	2.9	1,018	3.0	88	9.5
Services/Others	4,185	12.9	3,459	10.3	△ 725	△ 17.3
Total	32,440	100.0	33,672	100.0	1,232	3.8

※We made a partial amendment in previously disclosed data: the sales figures to banks of previous fiscal year.
JPY in Millions



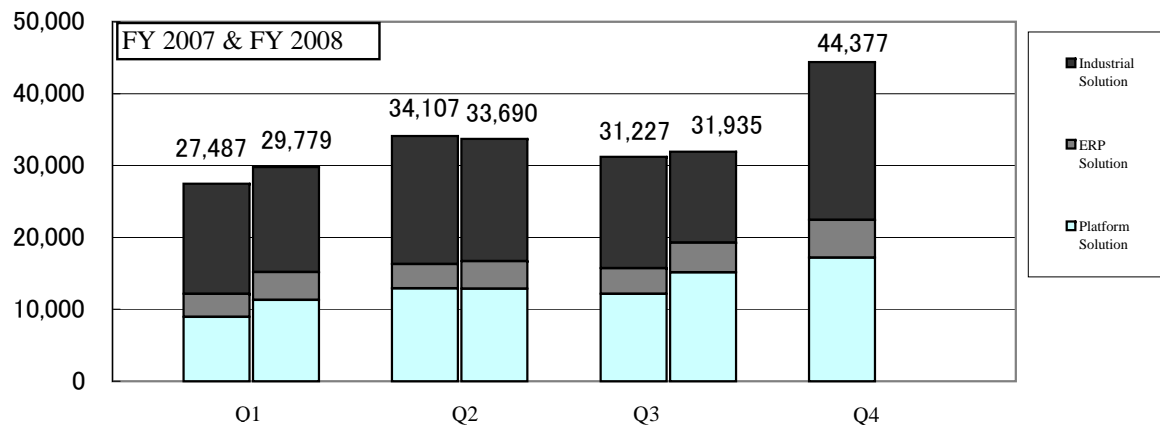
VIII.Sales by solution - Quarterly trends

		Q1		Q2		Q3		Q4		Total	
		Amount	%	Amount	%	Amount	%	Amount	%	Amount	%
FY 2008	Sales	29,779	8.3	33,690	△ 1.2	31,935	2.3				
	Industrial Solutions	14,574	△ 5.1	16,991	△ 4.7	15,119	△ 2.4				
	ERP Solutions	3,874	22.3	3,836	14.0	4,142	15.4				
	Platform Solutions	11,329	26.4	12,862	△ 0.4	12,673	4.4				
FY 2007	Sales	27,487	(20.0)	34,107	(24.9)	31,227	(22.8)	44,377	(32.3)	137,199	(100.0)
	Industrial Solutions	15,351	△ 3.2	17,824	△ 4.7	15,496	△ 0.1	21,952	5.9	70,625	△ 0.1
	ERP Solutions	3,168	(21.7)	3,365	(25.2)	3,589	(21.9)	5,218	(31.1)	15,341	(100.0)
	Platform Solutions	8,966	10.4	12,917	△ 5.1	12,141	△ 2.9	17,207	△ 5.5	51,232	△ 1.7

Percentage columns show year-on-year sales growth. Figures in bracket represent the percentage of sales out of annual sales.

Sales by solution - Quarterly trends

JPY in Millions



IX.Sales by segment - Quarterly trends

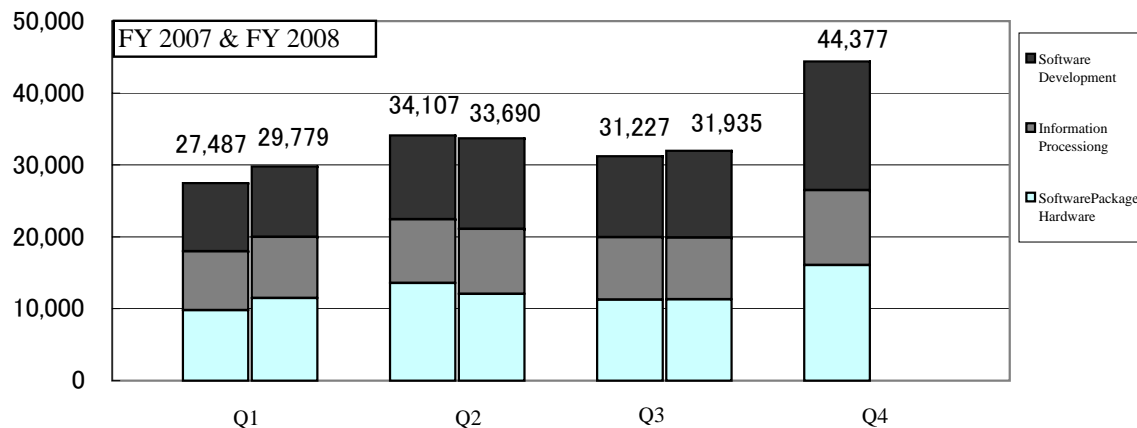
JPY in Millions

		Q1		Q2		Q3		Q4		Total	
		Amount	%	Amount	%	Amount	%	Amount	%	Amount	%
FY 2008	Sales	29,779	8.3	33,690	△ 1.2	31,935	2.3				
	Software Development	9,809	3.3	12,568	7.8	11,294	0.1				
	Information Processing	8,484	3.5	9,073	2.5	8,539	△ 1.6				
	Software Package / Hardware	11,485	17.2	12,048	△ 11.4	12,101	7.4				
FY 2007	Sales	27,487	(20.0)	34,107	(24.9)	31,227	(22.8)	44,377	(32.3)	137,199	(100.0)
	Software Development	9,493	△ 3.2	11,660	△ 4.7	11,286	△ 0.1	16,085	5.9	48,525	△ 0.1
	Information Processing	8,195	(19.6)	8,848	(24.0)	8,677	(23.3)	10,289	(33.1)	36,010	(100.0)
	Software Package / Hardware	9,798	2.7	13,597	△ 7.9	11,263	8.9	18,002	2.8	52,662	1.3

Percentage columns show year-on-year sales growth. Figures in bracket represent the percentage of sales out of annual sales.

Sales by segment - Quarterly trends

JPY in Millions



X. Amount of orders accepted and backlog (Software Development)

JPY in Millions

		Q1	Q2	Q3	Q4
FY2007	Orders accepted	16,256	11,579	12,357	
	Backlog	12,410	11,421	12,485	
FY2006	Orders accepted	14,747	10,463	10,544	11,706
	Backlog	12,283	11,085	10,343	5,964

XI. Sales of Software Package and Hardware

JPY in Millions

	2007/9		2008/09		Increase/Decrease	
	Amount	%	Amount	%	Amount	YoY changes(%)
Hardware sales	22,796	65.8	25,275	70.9	2,478	10.9
Software Package sales	11,863	34.2	10,359	29.1	△1,504	△12.7
Total	34,660	100.0	35,634	100.0	974	2.8

II. Sales to Sumitomo Corp. and Sumitomo Group Companies

JPY in Millions

	2007/9		2008/09		Increase/Decrease	
	Amount	% * ¹	Amount	% * ¹	Amount	YoY changes(%)
Sumitomo Corporation	9,606	10.4	8,928	9.4	△680	△7.1
Sumitomo Group Companies* ²	30,701	33.1	29,044	30.4	△1,657	△5.4

*¹ The percentage is the ratio to the amount of total sales

*² Sumitomo Group includes Sumitomo Corp. Group Companies

XIII. Quarterly trends

JPY in Millions

Figures in brackets show percentage out of quarterly sales.

FY2008	1st quarter (2008.4~6)		2nd quarter (2008.7~9)		3rd quarter (2008.10~12)	
	Amount	%	Amount	%	Amount	%
	Net sales	29,779	100.0	33,690	100.0	31,935
Industrial solution	14,574	(48.9)	16,991	(50.4)	15,119	(47.3)
ERP solution	3,874	(13.0)	3,836	(11.4)	4,142	(13.0)
Platform solution	11,329	(38.0)	12,862	(38.2)	12,673	(39.7)
Cost of sales	23,068	77.5	25,700	76.3	24,386	76.4
Gross Profit	6,710	22.5	7,989	23.7	7,548	23.6
S.G.&A.Expenses	5,859	19.7	5,850	17.4	5,803	18.2
Operating Income	851	2.9	2,139	6.3	1,745	5.5
Ordinary Income	975	3.3	2,246	6.7	1,859	5.8
Income before income taxes	957	3.2	2,067	6.1	531	1.7
Net Income	514	1.7	1,139	3.4	179	0.6

1st half (2008.4~9)		3rd quarter total (2008.4~12)		full year (2008.4~2009.3)	
Amount	%	Amount	%	Amount	%
63,469	100.0	95,405	100.0	138,000	100.0
31,565	(49.7)	46,685	(48.9)	—	—
7,711	(12.1)	11,853	(12.4)	—	—
24,192	(38.1)	36,865	(38.7)	—	—
48,769	76.8	73,155	76.7	106,000	76.8
14,700	23.2	22,249	23.3	32,000	23.2
11,710	18.4	17,513	18.4	23,500	17.0
2,990	4.7	4,736	5.0	8,500	6.2
3,222	5.1	5,081	5.3	8,900	6.4
3,025	4.8	3,557	3.7	—	—
1,654	2.6	1,833	1.9	4,000	2.9

FY2007	1st quarter (2007.4~6)		2nd quarter (2007.7~9)		3rd quarter (2007.10~12)		4th quarter (2008.1~3)	
	Amount	%	Amount	%	Amount	%	Amount	%
	Net sales	27,487	100.0	34,107	100.0	31,227	100.0	44,377
Industrial solution	15,351	(55.9)	17,824	(52.3)	15,496	(49.6)	21,952	(49.5)
ERP solution	3,168	(11.5)	3,365	(9.9)	3,589	(11.5)	5,218	(11.8)
Platform solution	8,966	(32.6)	12,917	(37.9)	12,141	(38.9)	17,207	(38.8)
Cost of sales	21,640	78.7	26,305	77.1	23,574	75.5	34,086	76.8
Gross Profit	5,847	21.3	7,801	22.9	7,652	24.5	10,291	23.2
S.G.&A.Expenses	5,497	20.0	5,244	15.4	5,233	16.8	5,308	12.0
Operating Income	349	1.3	2,557	7.5	2,419	7.7	4,983	11.2
Ordinary Income	437	1.6	2,641	7.7	2,475	7.9	4,994	11.3
Income before income taxes	508	1.8	2,819	8.3	2,368	7.6	4,357	9.8
Net Income	176	0.6	1,547	4.5	1,282	4.1	2,408	5.4

1st half (2007.4~9)		3rd quarter total (2007.4~12)		full year (2007.4~2008.3)	
Amount	%	Amount	%	Amount	%
61,594	100.0	92,821	100.0	137,199	100.0
33,176	(53.9)	48,672	(52.4)	70,625	(51.5)
6,533	(10.6)	10,123	(10.9)	15,341	(11.2)
21,883	(35.5)	34,025	(36.7)	51,232	(37.3)
47,945	77.8	71,520	77.1	105,606	77.0
13,648	22.2	21,301	22.9	31,593	23.0
10,741	17.4	15,975	17.2	21,283	15.5
2,907	4.7	5,326	5.7	10,309	7.5
3,078	5.0	5,554	6.0	10,548	7.7
3,328	5.4	5,696	6.1	10,053	7.3
1,724	2.8	3,006	3.2	5,415	3.9

Increase / Decrease	1st quarter		2nd quarter		3rd quarter	
	Amount	%	Amount	%	Amount	%
Net sales	2,291	8.3	△ 416	△ 1.2	708	2.3
Industrial solution	△ 777	△ 5.1	△ 833	△ 4.7	△ 376	△ 2.4
ERP solution	705	22.3	471	14.0	553	15.4
Platform solution	2,363	26.4	△ 54	△ 0.4	531	4.4
Cost of sales	1,428	6.6	△ 604	△ 2.3	811	3.4
Gross Profit	863	14.8	187	2.4	△ 103	△ 1.4
S.G.&A.Expenses	361	6.6	606	11.6	569	10.9
Operating Income	501	143.6	△ 418	△ 16.4	△ 673	△ 27.8
Ordinary Income	537	123.0	△ 394	△ 14.9	△ 616	△ 24.9
Income before income taxes	449	88.4	△ 751	△ 26.7	△ 1,836	△ 77.6
Net Income	337	191.8	△ 407	△ 26.4	△ 1,103	△ 86.0

1st half		3rd quarter total	
Amount	%	Amount	%
1,875	3.0	2,583	2.8
△ 1,610	△ 4.9	△ 1,987	△ 4.1
1,177	18.0	1,730	17.1
2,308	10.6	2,840	8.3
823	1.7	1,635	2.3
1,051	7.7	947	4.5
968	9.0	1,537	9.6
83	2.9	△ 589	△ 11.1
143	4.6	△ 473	△ 8.5
△ 302	△ 9.1	△ 2,138	△ 37.5
△ 69	△ 4.1	△ 1,173	△ 39.0